



# GAT MONTHLY MEMBERSHIP PROGRESS REPORT

Results as of: 3/31/2023

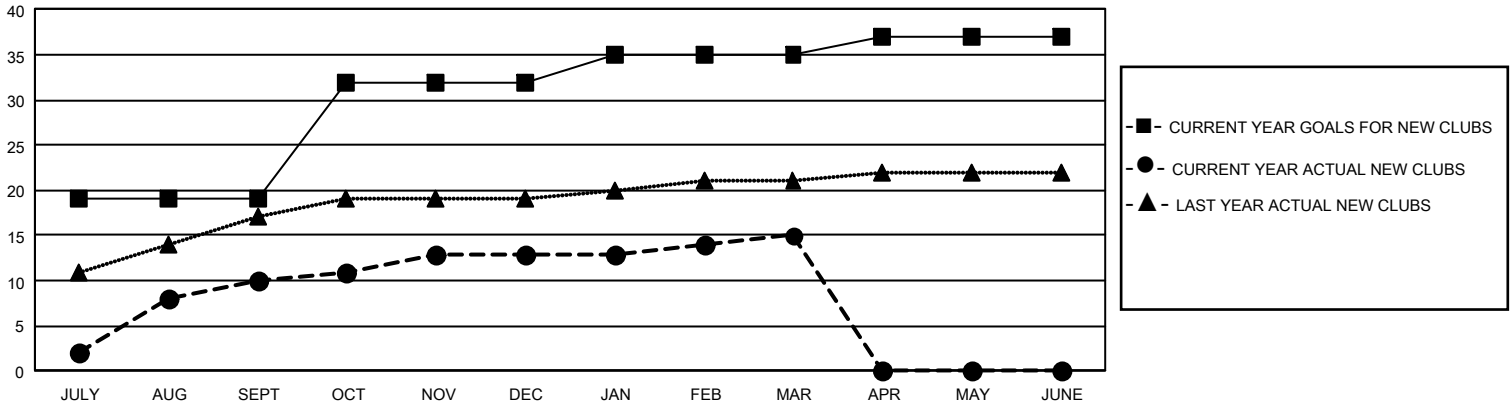
## GMT Constitutional Area 5 - M, Group F

REPORT DOES NOT INCLUDE CLUBS IN UNDISTRICTED AREAS.

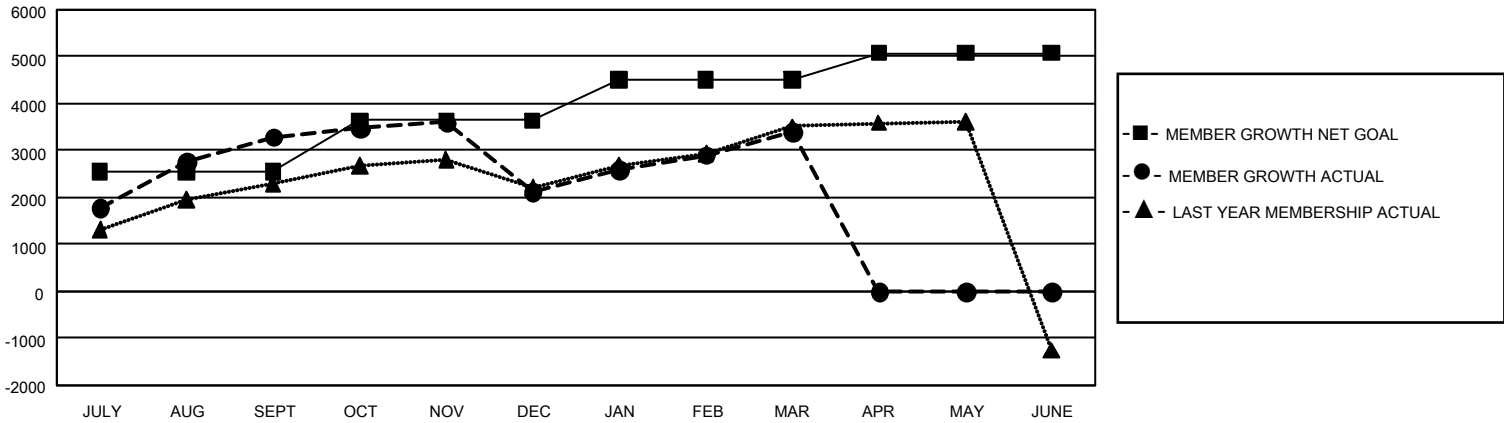
Clubs			
RESULTS FOR 2022-2023			
QUARTER	NEW CLUB GOAL	NEW CLUBS	DROPPED CLUBS
JULY/AUG/SEPT	57	10	8
OCT/NOV/DEC	39	3	4
JAN/FEB/MAR	9	2	4
APR/MAY/JUNE	6	0	0

Members			
RESULTS FOR 2022-2023			
QUARTER	MEMBER GROWTH NET GOAL	MEMBER GROWTH ACTUAL	DROPPED MEMBERS ACTUAL (including transfers)
JULY/AUG/SEPT	2540	4,533	896
OCT/NOV/DEC	1100	826	1,853
JAN/FEB/MAR	864	1,654	213
APR/MAY/JUNE	573	0	0

GOALS AND ACTUAL NEW CLUBS CUMULATIVE



GOALS AND ACTUAL MEMBERS CUMULATIVE



<b>DROPPED CLUBS: 16</b>	968 CLUBS OF 1,116 ADDED 1 OR MORE NEW MEMBERS	<b>GENDER DISTRIBUTION</b>	
		MALE 27,815 (65.93%) FEMALE 14,360 (34.04%) NON BINARY 0 (0.00%) PREFER NOT TO ANSWER 14 (0.03%)	
<b>DROPPED MEMBERS</b>		<b>TOTAL FAMILY UNIT MEMBERS 7,408</b>	
DECEASED 84 CLUB CANCELLED 18 OTHER 2,860 <b>TOTAL 2,962</b>	<a href="#">CLICK HERE FOR CUMULATIVE MEMBERSHIP DATA</a>	<b>FAMILY MEMBERS PAYING HALF DUES 4,502</b>	